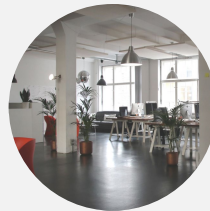
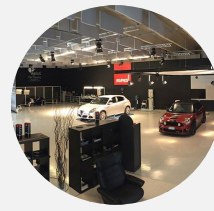


# NIVEUS - PROFESSIONAL AIR PURIFIER

The new RUPES NIVEUS Air Purifier (Cod. NV100) is the optimal solution to have an excellent air purification and create a healthy environment, increasing workers' protection, and thanks to its compact dimensions, can be easily installed in several sites.



OFFICES



TRAINING CENTERS



MEDICAL



MEETING ROOMS

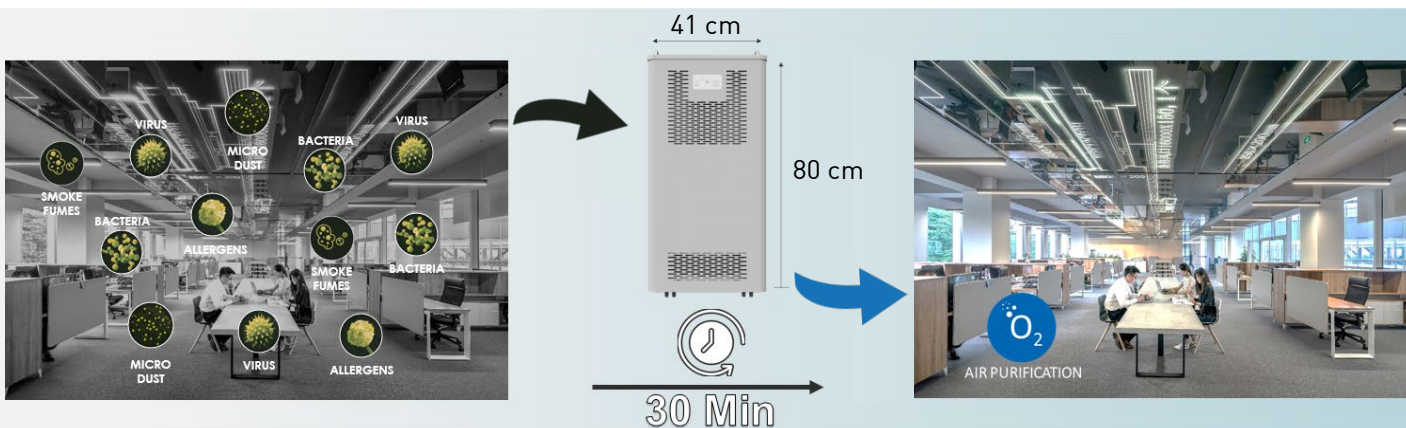


MANUFACTURING



HOSPITALITY

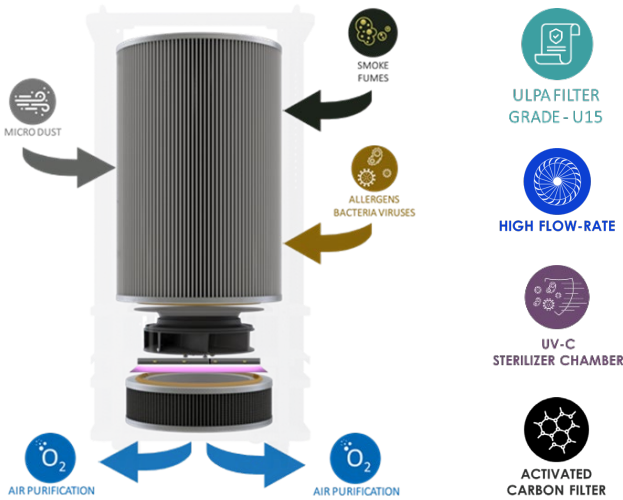
RUPES Air Purifier can cover several environments **up to 120m<sup>2</sup> or 300m<sup>3</sup>**. This purifying product increases indoor air quality, reducing and capturing micro dust, allergens, bacteria and virus with the purpose of improving workers' health.



People can be exposed to a variety of substances at work which can lead to harmful health effects. Workplace pollution is defined as the presence of hazardous materials visible and invisible such as micro dust, bacteria, virus, allergens, vapors and fumes. The main exposure routes are through inhalation, direct contact and swallowing.

# ULPA FILTER GRADE U15 & BRUSHLESS MOTOR

Contaminated air passes through ULPA filters grade U15 which are made of fine mesh that blocks harmful particles. An UV-C sterilizer chamber sterilizes ultra micro organisms and an activated carbon filter purifies the air before it is released into the environment. RUPES Air Purifier is an opportunity to increase safety and protection of workers and improve the indoor air quality.



ULPA FILTER GRADE U15

POWERFUL BRUSHLESS MOTOR

UV-C STERILIZER CHAMBER

ACTIVATED CARBON FILTER

## FILTERS TECHNICAL DATA

|  |                               |
|--|-------------------------------|
| FILTERING SURFACE<br>(ULPA FILTER – U15) | 8 m <sup>2</sup>              |
| FILTRATION EFFICIENCY                    | 99,9995%<br>0,12 µm particles |
| FILTER GRADE                             | ULPA – U15                    |

|  |                  |
|--|------------------|
| FILTERING SURFACE<br>(ACTIVATED CARBON FILTER) | 1 m <sup>2</sup> |
|--|------------------|

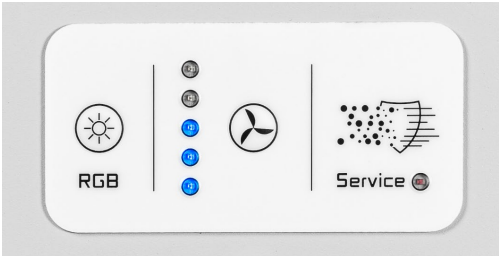


## POWERFUL BRUSHLESS MOTOR

A powerful brushless motor provides high performance to cover wide working environments and an ideal solution with the maximum energy saving with relevant costs saving.

|                 |                       |
|-----------------|-----------------------|
| ELECTRIC SUPPLY | 230 V                 |
| POWER           | 86 W                  |
| FLOW RATE       | 300 m <sup>3</sup> /h |

## CONTROL PANEL



Intuitive Control Panel for air flow regulation and lighting control.

