

EUROPRO

USER MANUAL MIXPRO 70

Ref. 30915



EUROPE PROJECTION - 228, avenue Olivier Perroy 13790 ROUSSET
Tél : +33 (0)4 42 29 08 96 – Fax : +33 (0)4 42 53 44 36
SAS au capital de 400 000€ - SIREN 394 961 510 – NAF 2892 Z

Edition of 19/02/2019

SUMMARY

1. INTRODUCTION	p. 4
2. USER MANUAL	p. 5
2.1. Importance of the manual	p. 5
2.2. Receivers of the manual	p. 5
3. WARNING	p. 6
3.1. Safety	p. 6
3.2. Electric connection	p. 8
3.3. End-of-life of the product	p. 8
4. YOUR MACHINE	p. 9
4.1. Description	p. 9
4.2. Technical characteristics	p. 9
4.3. Identification of the components	p.10
5. USE OF THE MACHINE	p.12
5.1. Prerequisites	p.12
5.2. Starting up	p.13
5.3. Error codes	p.14
6. SETTING OF THE LEVEL DETECTOR	p.15
7. CLEANING PROCEDURE	p.16
8. DECLARATION OF CONFORMITY	p.17
9. WARRANTY	p.18
9.1. Warranty conditions	p.18
9.2. Warranty certificate	p.19

1. INTRODUCTION

You just acquired a **MIXPRO 70 mixer** and all the team of Europe Projection thanks you for the confidence you have granted us.

Manufacturer of professional equipments for paint and fillers, we have put our know-how for 20 years at the service of the users of our machines.

Our technical and commercial team is at your disposal for any further information you may need about the machine you just acquired.

EUROPE PROJECTION

228, avenue Olivier Perroy 13790 ROUSSET

Tél : +33 (0)4 42 29 08 96 – Fax : +33 (0)4 42 53 44 36

SAS au capital de 400 000€ - SIREN 394 961 510 – NAF 2892 Z

2. USER MANUAL

2.1. IMPORTANCE OF THE MANUAL

This manual is a key part for the use of your machine. It summarizes the procedures of starting-up, cleaning and maintenance of the device and also the safety instructions you need to observe.

Read carefully all the working and safety instructions and the warnings included in this manual before starting your machine.

Most of the accidents are caused by the non-compliance of the safety standards and rules.

This manual must be kept near the machine, within reach of the user and held in good condition until the final destruction of the machine.

In case of loss or deterioration of the manual, you can ask the machine manufacturer mentioned on page 4 for a copy at any moment.

2.2. RECEIVERS OF THE MANUAL

This manual is intended to any staff which will manipulate the machine :

- people in charge of the transport of the machine
- people in charge of the use of the machine
- people in charge of the cleaning and maintenance of the machine
- people in charge of the final destruction of the machine

3. WARNING

3.1. SAFETY

Using the machine in an incorrect way or in non-compliance of the safety instructions indicated in this manual can cause death or serious injuries.

Read carefully all the working and safety instructions and the warnings contained in this manual before starting your machine.



- Respect all the safety standards before running the equipment.
- Use the equipment only for the applications specified in the manual.
- Always remain alert when using the equipment.
- Transport the machine using the handles or the appropriate grips.
- During the breaks, disconnect electrically the machine.



- Run the equipment to its nominal voltage.
- Let at least 50 cm of free space between the equipment and any obstacle so that the air flow is not blocked.
- Know how to quickly stop the equipment in case of necessity.
- Never use the equipment while it is running abnormally or it is defective.
- Do not direct a water jet or flammable liquid on the machine.
- Never direct an air jet or product jet on a person or an animal.
- Do not touch warm surfaces of the equipment.
- Always wear adequate body protections (glasses, gloves, overall and mask) and pay attention to long hair.
- Never touch moving parts.
- Do not insert any object or the hands inside the protection grids to avoid any accident or damage to the machine.
- For any outside job, only use appropriate extension cords.



- Maintain the equipment carefully and clean it properly after every use.
- Disconnect the equipment before any intervention.
- Avoid absolutely to unscrew any connection while the machine is under pressure.
- Check the damaged parts.
- Do not clean the plastic parts with solvent.
- In case of damage of the electric cable or the plug, do not run the machine and contact a licensed After-Sale Service to put genuine parts instead of the defective ones.
- In case of needed After-Sale Service, always specify the machine model and its serial number.
- For any replacement of parts, only use genuine parts.

3. WARNING (continued)

3.1. SAFETY (continued)



- Do not modify the machine.
- Do not cut or dismantle the protection grids.
- Do not open the electric box.

WORKSPACE

- Maintain the workspace clean and clear.
- Ambient operating temperature must be from 5°C and 35°C.
- Do not use the equipment in a potentially explosive area.
- Do not place any potentially inflammable objects in close proximity to the machine.
- Take away every not qualified person from the working area of the machine, as well as children and animals.
- In case of installation of the machine on scaffolding or a plan above ground level, attach the machine to avoid any fall while operating.
- Do not install the equipment on an inclined surface to avoid the risks of unexpected moves or falls.

HOSES

- Always use hoses and connections adapted to the used product (genuine parts), do not try to fix it.
- Do not walk on the hoses, do not bend them.
- Do not use the hoses to pull the machine.

STORAGE

- Keep the equipment in a clean and clear area in which the temperature does not exceed +35°C.
- After every use, necessarily grease the pump with a mixture of water + storage liquid to avoid it blocking up. The storage of a not greased pump can damage it seriously.

IN CASE OF NECESSITY, WE SAVE OURSELVES THE RIGHT TO MAKE ANY USEFUL MODIFICATION WITHOUT ADVANCED NOTICE.

3. WARNING (continued)

3.2. ELECTRIC CONNECTION



The electric connection of the machine must be on a 16A - 230V plug with a differential circuit breaker.

Before any intervention on the machine, make sure that every energy supply is cut (air and electricity).

GROUND CONNECTOR

All the machines must be connected to the ground when they work to protect the operator from electric shocks. Our machines are all equipped with standardized connection plugs.

Electric connection must be made by a qualified technician. It is forbidden to modify or dismantle the machine, especially the electric box.

Repairs must be made by an authorized center or our After-sale Service.

During any intervention on the machine, make sure that the ground is well reconnected.

EXTENSION CORDS

During the use of an extension cord, make sure that it is not crushed or damaged and that it contains a ground. Check that the section of the used extension cord is sufficient to support the machine when it is working. A too thin extension cord can cause voltage drops or overheating of the machine.

In case of use of a cable reel, it is imperative to unwind it entirely, otherwise, the equipment can be damaged. The section must be proportional to the length of the cord.

3.3. END OF LIFE OF THE PRODUCT



At its end-of-life, the machine must not be eliminated with the other household waste. The uncontrolled elimination of waste can harm the environment or human health. Individuals are invited to contact the distributor which sold them the product or to inquire with their city hall to know where and how to get rid of the product so it can be recycled while respecting the environment.

Under the regulation of Waste of Electrical and Electronic Equipments (WEEE), we undertake to process the used EEEs according to the following provisions: applicable only to products on the market since 08/13/05, under the brands EUROPE PROJECTION or VOLUMAIR, products of other brands sold by our company (upon presentation of the corresponding invoices), products that operate using electrical energy (for example, thermal washers or compressors do not fall into this category).

Treatment modality

WEEE returns collected by our clients/distributors at their own expense to our collection points in Antony (92) or Rousset sur Arc (13). Upon receipt, the products are sorted by our employees and directed to the most appropriate processing channels.

For any further information, please contact our hotline to conseil@euromair.com or +33 4 42 29 08 96.

4. YOUR MACHINE

4.1. DESCRIPTION

The MIXPRO 70 mixer allows a quick and homogeneous mixing of powdered products. It is equipped with a speed controller and a water doser. Its control panel with digital display is easy to use.

The 4-positions adjustable frame is adapted to receive the MIXPRO 70 mixer. With a spacing of 535mm between its feet, a Compact-Pro machine type 10 to 50 may be slid underneath.



Do not use corrosive, acid products or other types of products susceptible to damage the tank or the propeller.

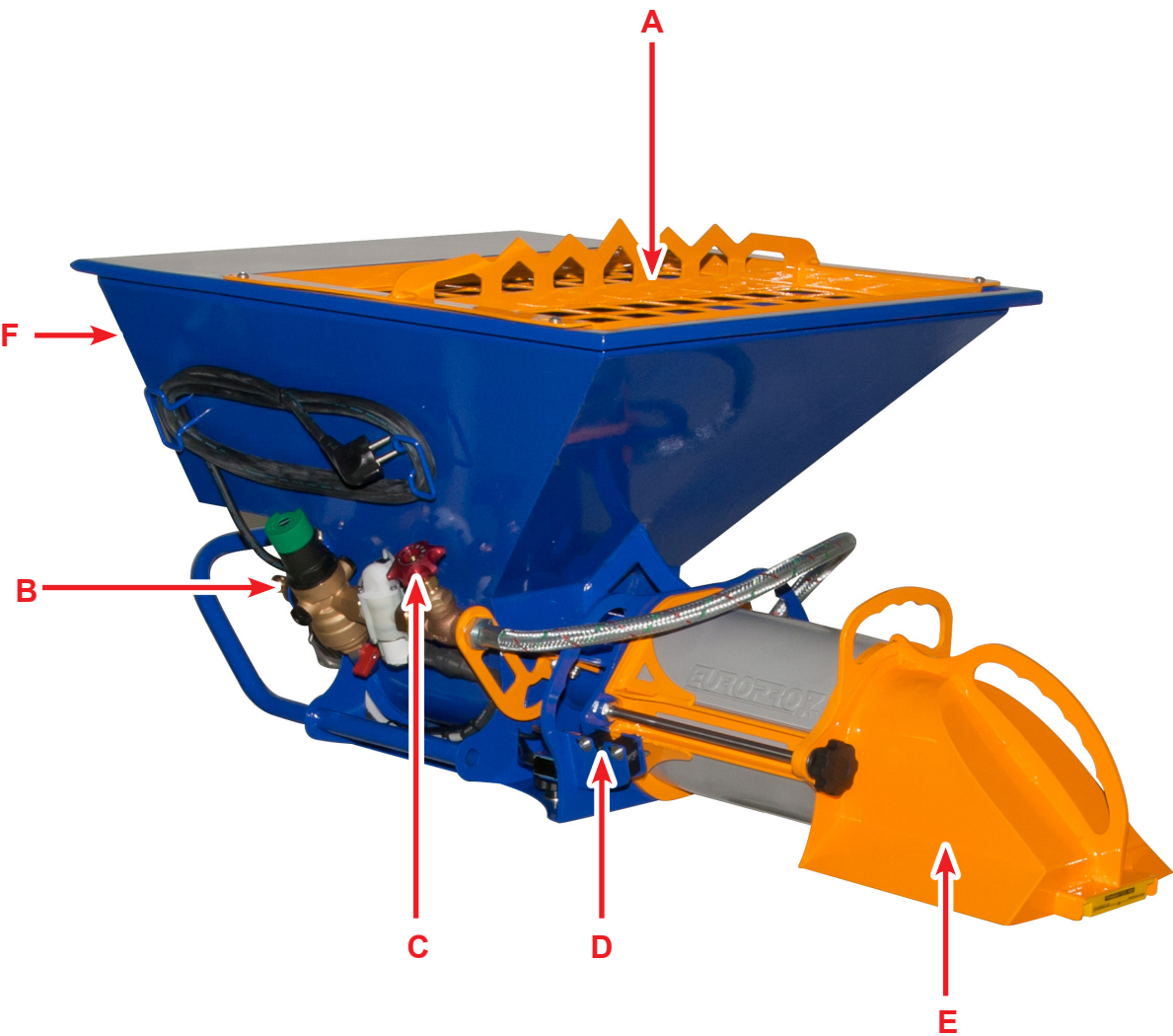
The distribution network of water is planned for the use of water only. The use of another product, whatever it is, can seriously damage the mixer.

4.2. TECHNICAL CHARACTERISTICS

Machine compatible with	CP Joint 10, CP 10, 15, 20, 25, 30, 35, 40, 45 & 50
Mixing type	continuous
Motor	0,75 kW
Forward / reverse rotation speed	50 to 280 RPM
Power supply	230 V - 10 A - 50 & 60 Hz
Tank capacity	40 L
Water meter	integrated
Mixing paddle	continuous scrow
Loading height	129 cm
Dimensions (L x w x h)	133 x 73 x 92 cm
Dim. high position (L x w x h)	98 x 73 x 129 cm
Weight	41 kg (60 kg with the frame)

4. YOUR MACHINE (continued)

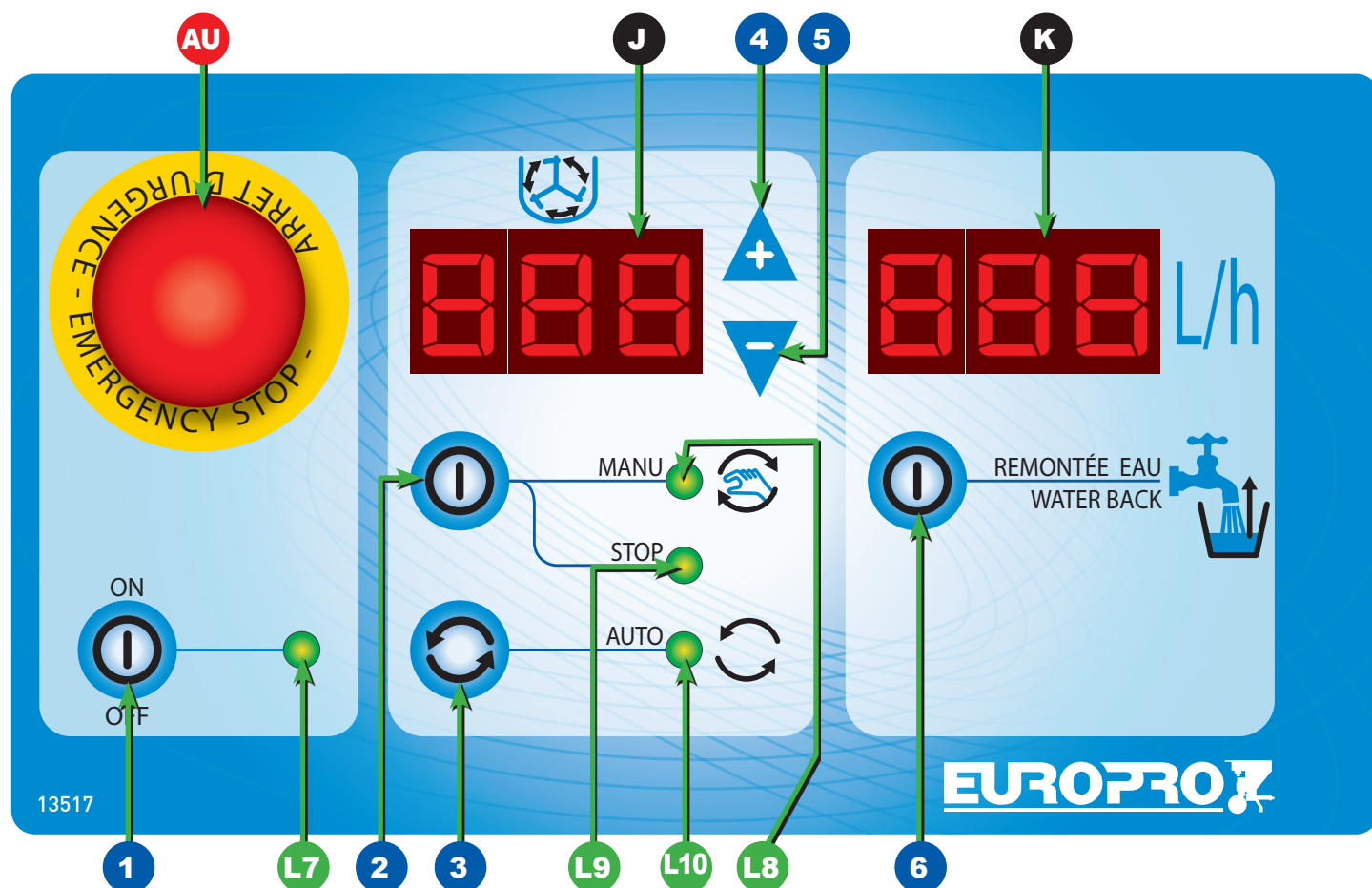
4.3. IDENTIFICATION OF THE COMPONENTS



A	Safety grid
B	Water inlet quick-connector
C	Water flow-rate regulation valve
D	Level detector
E	Product outlet
F	Control panel (see next page)

4. YOUR MACHINE (continued)

4.3. IDENTIFICATION OF THE COMPONENTS (continued)



- 1** ON / OFF : Start / Stop of the mixer
- 2** MANU/STOP : Start / stop of the mixing
- 3** AUTO : Start / Stop of the automatic mode
- 4** + : increases the mixing speed
- 5** - : decreases the mixing speed
- 6** WATER BACK : allow the injection of water in the mixing chamber
- L1** Light on: Power on
- L2** Light on: mixing is in manual mode
- L3** Light on: mixing is stopped
- L4** Light on: mixing is in automatic mode
- AU** Emergency stop
- J** Motor display
- K** Water display

5. USE OF THE MACHINE

5.1. PREREQUISITES

- The electric connection has to be 230 V - 16 A - 50 or 60 Hz with a 3 x 1,5 mm cable reel of 40m maximum, completely unreeled.

Start / Stop

- Once the mixer is plugged in, it is in the STOP mode, the display (J) indicates "OFF".
- One push on the ON/OFF button (1), the display (J) indicates the setting value of the mixing speed in %, le light (L1) lights up, the mixer is ready to work.
- When the mixer is ready to work (light (L1) lighted up), one push on the ON/OFF button (1) will switch the mixer off. The display (J) indicates "OFF" and the light (L1) lights out.



In case of a dysfunction of the machine, one 3 second push on the "ON/OFF" (1) will allow you to verify that the power supply is over 210V.

5. USE OF THE MACHINE (continued)

5.2. START-UP

1. Plug the mixer in, the display (J) indicates "AU" (emergency stop). Turn the red button (AU) to deactivate it.
2. The display (J) indicates "OFF", press the ON/OFF button (1) to start the mixer, the light (L1) lights up.
3. The display (J) correspond to the mixing speed from 0 to 100%. The display (K) correspond to the water flow-rate in litre per hour.
4. Connect the mixer to the water supply with help of the quick-connect (B).
5. Place a bucket beneath the mixer exit (E).
6. Press the WATER BACK button (6), then set the water flow-rate to 250 L/h (indicated on the display (K)) with help of the regulation valve (C).
7. Put the mixer in manual mode by pressing the button (2), the light (L2) lights up.
8. Set the mixing speed to 50% with help of the (4) and (5) buttons.
9. Break the bags of powder on the grid (A) to fill the tank.
10. Press the MANU button (2) to start the mixer.
11. Let the product flow in the bucket for 20 seconds, so the mixing is stabilized.
12. The product will be very liquid at first, then it will reach the desired texture, depending on the selected settings.
13. To improve the setting, increase or decrease the speed on the display (J) with help of the (4) and (5) buttons. Increase the speed will make the product drier, decrease the speed will make it more liquid.
14. When the desired texture is reached, press the button (2) to put the mixer in STOP mode, the light (L3) lights up.
15. If the Mixer is used alone, press again the button (2) to put the mixer back in manual mode.
16. If the mixer is coupled with a machine, put the mixer in AUTO mode with help of the (3) button. The product will flow by the exit (E) in the tank of the machine. The level detector (D) manage automatically the the start or stop of the mixer, depending on the product level in the tank (**see 5.6. "Setting of the level detector", page 15**).

5. USE OF THE MACHINE (continued)

5.3. ERROR CODES

The different error codes show up on the display (J).

CODES	DEFINITION	TO DO
	No display.	Plug the machine into the power supply, assure the power supply is 230 V, verify the fuse in the electric box.
AU	Emergency stop is on.	Unlock the emergency stop button (AU).
OFF	Machine is in the stop mode.	Switch the machine on by pressing on the button (1).
MOT	Default control engine.	Set the machine to "OFF" for one minute and then switch it back on.
TEL	Default command departure.	Verify that the lance is closed when the machine is switched on.

If the problem persists or if in doubt about the correct working of the machine, do not try to repair the machine yourself or to dismantle it.

Contact an authorized After-Sale Service or our hotline on : +33 4 42 29 08 96.

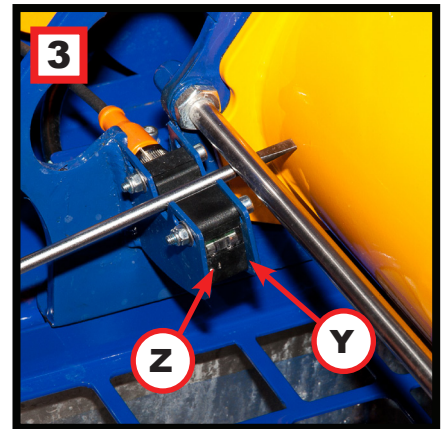
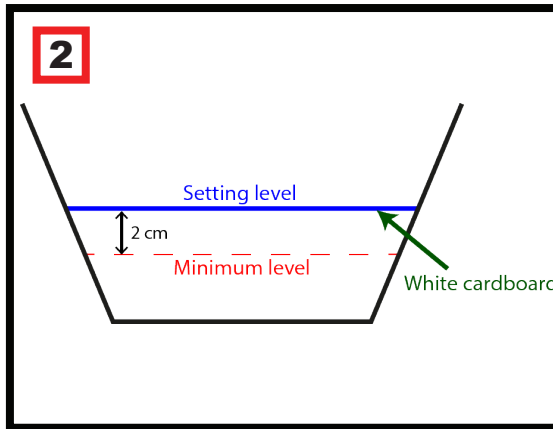
6. SETTING OF THE LEVEL DETECTOR



This operation must be done in the 5 minutes following the starting-up of the mixer. Otherwise, the level detector will be locked.

1. Place a piece of white cardboard in the tank of the machine* (photo 1), 2 centimeters above the minimum level of product desired (plan 2)
2. Place a screwdriver on the level detector (photo 3) until the Y and Z LED flash quickly (6 Hz). Remove the screwdriver, the detector is reset.
3. Place the screwdriver again until the Y and Z LED flash slowly (2 Hz), remove the screwdriver.
4. Place the screwdriver a third time, Y and Z LED will stay on. Remove the screwdriver.
5. Repeat the previous step one time.

**this step can be done by filling the tank with product instead of using the white cardboard.*



When the product in the tank of the machine will reach the minimum level set previously, the mixer will start again (if AUTO mode is activated - (light (L10) lighted up)) until the tank is filled to the setting level.

Reached the setting level, the mixer will work during another 25 seconds (temporization of mixing). Depending on the machine flow-rate, increase or decrease the temporization of mixing by following the procedure below.

Setting of the temporization of mixing

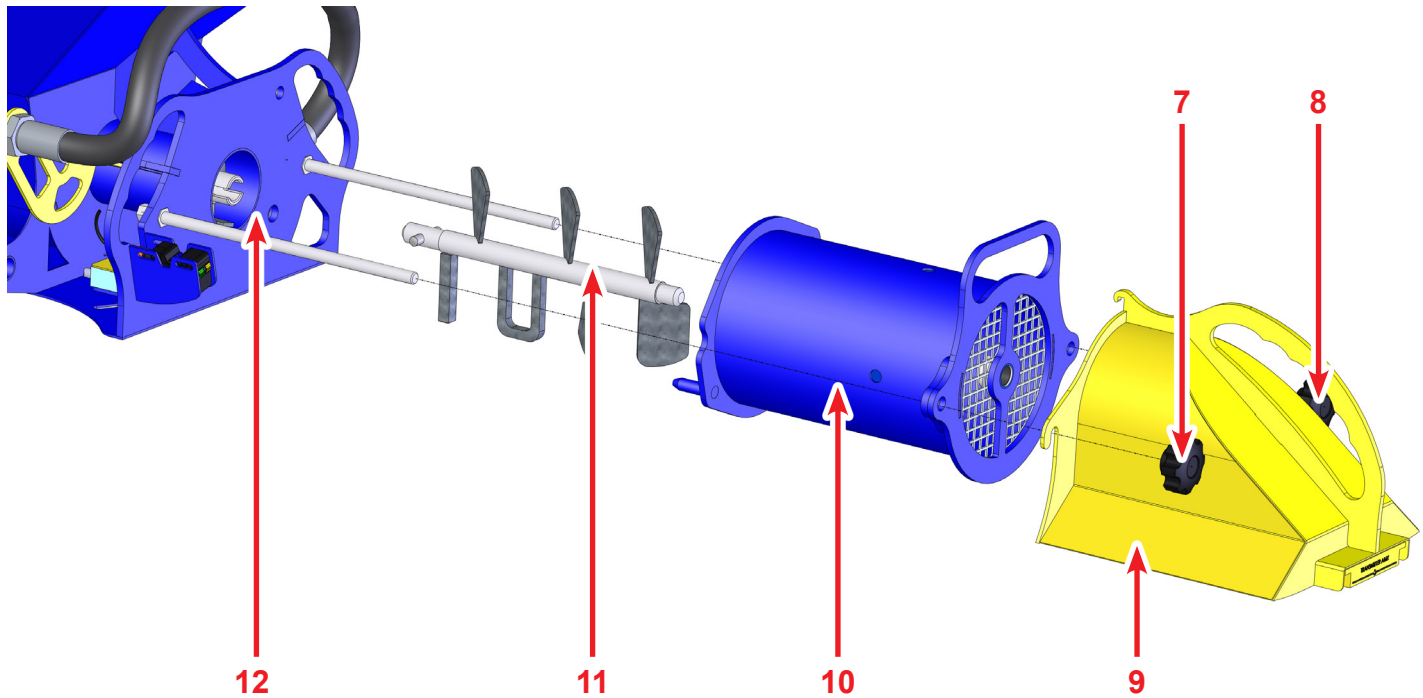
1. Press the MANU/STOP button (2) then press ON/OFF (1) and keep the two buttons pressed.
2. Release the MANU/STOP button (2) only, the (L4) light flashes.
NB: the ON/OFF button (7) must be maintained pressed till the end of the procedure.
3. Press MANU/STOP (2) once, the (J) display shows "H02". Press the MANU/STOP button (2) a second time, the light (L4) flashes and the display (J) shows 25 seconds.
4. Set the new temporization time with help of the (4) and (5) buttons.
5. Once the temporization time is chosen, press the AUTO button (3) to validate the operation.
6. Release ON/OFF (1).

7. CLEANING PROCEDURE



Disconnect the plug of the mixer from the mains voltage before any intervention.

1. Unscrew the tightening thumbwheels (7) & (8) of the product outlet.
2. Dismantle the mixing chamber (10), the mixing shaft (11) and the outlet (9) and clean these 3 parts.
3. Clean the powder outlet of the mixing chamber on the mixer (12).



The direct projection of water under pressure onto the control panel has to be stopped at the risk of water infiltration into the electric box. Proceed by simply cleaning with a humid sponge.

8. DECLARATION OF CONFORMITY

THE MANUFACTURER : EUROPE PROJECTION
228, avenue Olivier Perroy
13790 ROUSSET

DECLARES THAT THE EQUIPMENT DESIGNATED BELOW :

Trademark : EUROPE PROJECTION

Type : Mixer

Model : MIXPRO 70

COMPLIES WITH:

- the R.233-73 article of the Labour Code

THE DIRECTIVES :

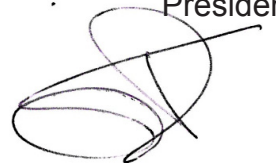
- Machines 2006/42/CE
- Low voltage 2014/35/UE
- CEM 2014/30/UE
- ROHS 2011/65/UE
- 2005/88/CE noise emissions

AND WITH THE STANDARDS:

- NF EN ISO 12100
- NF EN 60204-1
- NF EN ISO 13857

ROUSSET, JANUARY 20th 2019

Patrick BOREL
President



Distributed by : **EUROMAIR DISTRIBUTION**
228, avenue Olivier Perroy 13790 ROUSSET
Tél : +33 (0)4 42 29 08 96 – Fax : +33 (0)4 42 53 44 36
SAS au capital de 400 000€ - SIREN 394 961 510 – NAF 2892 Z

9. WARRANTY

9.1. WARRANTY CONDITIONS

Each product is delivered inspected and tested.

We exclude any warranty for visible defects for which the customer did not claim within 48 hours.

The sold equipments are covered by the warranty for the period defined by the manufacturer from the purchase date, onwards the date on the original proof of purchase being valid.

This warranty covers any equipment against any manufacturing or material defect for normal use and service.

The defects or deteriorations caused by natural wear, external accidents or a modification, use, storage or treatment of equipments not planned by the manufacturer, nor specified by ourselves, are excluded from any warranty.

Are expressly excluded from the warranty the defects coming from:

- a bad use
- the application of abrasive or corrosive products
- an inappropriate installation
- negligence
- an insufficient maintenance or cleaning
- chemical, electrochemical or electric influences
- any change in the normal process of use

The following wearing parts are not covered by the warranty:

- rotors, stators, driving shafts, connecting rods, seals, cleaning balls
- spray guns, lance, nozzle, hose, needle kits
- cylinders, piston rods, prime/spray valve assy, seal kits, membranes, suction and delivery valves
- carding machine vanes
- filters, oils

The warranty also excludes the equipments:

- on which the serial number was erased or made illegible
- on which unauthorized people made attempts of repair
- which were totally or partially dismantled

Our equipments are covered by a warranty (parts and labour) of 12 months following the purchase.

The duration of this warranty can be extended by 6 months by completing the warranty extension form on our website within 4 weeks after purchasing: www.euromair.com (section «Warranty»)

The defective equipments must be sent at the customer's charge in the place we shall have specified him. The warranty will be subject to the presentation of the invoice. Then we will be able to proceed, free of charge, to the repair of the defective equipment.

The equipments repaired (under warranty) will be shipped free of charge to the customer during the first year of warranty.

Beyond this date, the transport of the repaired equipment will be chargeable to the customer.

In case of intervention of our services on a breakdown caused by the customer or a breakdown excluded in the above-mentioned conditions, the costs of repair and transport will be charged to the customer.

We exclude any responsibility for any consequential damages suffered by the customer, such as, but this without restriction, the losses of income, turnovers, loss of image, of whatever nature.

In any case, our responsibility will be limited to the amount paid by the customer for the defective equipments.

Any action of the customer against us relative to the warranty of the equipments will be prescribed to the deadline of 1 year from the day of the discovery of the cause of the action.

9. WARRANTY (continued)

9.2. CERTIFICATE OF WARRANTY

**IT IS COMPULSARY TO RETURN THIS DOCUMENT DULY COMPLETED
BY E-MAIL : contact@euromair.com OR BY FAX : +33(0)4 42 53 44 36**

IMPERATIVE

The manual must be provided to the user of the equipment.

It must be read before starting up the machine.

For any intervention under warranty, the purchase invoice must be presented.

WARRANTY

Each product is delivered inspected and tested.

Moreover, it is guaranteed for 12 months from the date of purchase.

This guarantee only applies if the buyer respects the safety regulations, contractual and administrative standards and if the use was in conformity with the instructions present in the user manual.

Based on this warranty, the manufacturer will repair or replace free of charge any part that can deteriorate itself or be defective during this period.

The "final judgment" rests solely with our After-Sale Service technicians.

The guarantee does not cover parts which, because of their specific use, are subject to wear and tear.

If the identified defects could not be attributed to our liability, costs will be charged to the buyer.

MODEL : MIXPRO 70 mixer

SERIAL NUMBER :

DELIVERY NUMBER :

Rousset, dated

Signature of the dealer

Signature of the final user

Stamp of the final user



Distributed by : **EUROMAIR DISTRIBUTION**
228, avenue Olivier Perroy 13790 ROUSSET
Tél : +33 (0)4 42 29 08 96 – Fax : +33 (0)4 42 53 44 36
SAS au capital de 400 000€ - SIREN 394 961 510 – NAF 2892 Z

EUROPE PROJECTION - 228, avenue Olivier Perroy 13790 ROUSSET

Tél : +33 (0)4 42 29 08 96 – Fax : +33 (0)4 42 53 44 36

SAS au capital de 400 000€ - SIREN 394 961 510 – NAF 2892 Z