



FULL LINE CATALOGUE

TABLE OF CONTENTS

01 FOCUS

The power of airless and the control of XVLP built into one versatile sprayer.

04 ELITE

Lightweight, gas-powered sprayer, for small to medium-sized jobs.

07 POWRLINER

A broad line of pavement and turf marking equipment for all size projects.

02 CAPSPRAY

Maximize productivity and profit with these lightweight, portable sprayers.

05 POWRBEAST

Heavy-duty gas-powered direct immersion sprayer for large-scale jobs.

08 LAZYLINER

Take a load off and increase your pavement and turf marking production.

03 IMPACT

Durable electric airless sprayers built with smart features that make an Impact.

06 POWRTWIN

For large scale residential, commercial and industrial applications.

09 ACCESSORIES

Titan offers a full range of airless accessories for a full range of applications.

OUR MISSION

When your business depends on the tools you use, you need to be able to count on the people who make them. Our relentless commitment to helping every professional painter be their best leads to better work, improved ROI and growing business.



Contact one of our dependable Country Importer or call our dedicated customer service team for more information.

Visit us on the web at:

titantool-international.com

Service Department

Customer.Service-PF@wagner-group.com

ADDRESS

J. Wagner GmbH

Otto-Lilienthal-Str. 18

88677 Markdorf

All information contained in this brochure is based on the latest information available at the time of printing. Titan reserves the right to make changes at any time, without notice. Due to continuous innovation, specifications may progressively change. Contact one of our dependable sales reps or call our dedicated customer service team for more information.

FOCUS

Business is demanding and you need the kind of performance you expect from Titan sprayers. It's time to invest in the expanded features and performance that will make a major IMPACT on your profit margin.



Features:

HIGH PRODUCTIVITY

XVLP Spraying Sysrtem has the productivity of an airless using a 413 tip.

PROFESSIONAL FINISH

Provides a professional XVLP-style finish.

10X THE LIFE

Than a hand held airless sprayer.

WIDE PATTERN

Adjust your spray pattern from 1 to 14 inches and quickly change from a horizontal to vertical pattern with the turn of the nozzle.

QUICK-CHANGE SYSTEM

Change your coating or application on the fly.

ERGONOMIC HANDLE

Comfortable to carry plus easy to wrap hose and store gun.

SPECIFICATIONS	FOCUS 500	FOCUS 700
Voltage	230 V / 50 Hz	230 V / 50 Hz
Power consumption	0.7 kW	1.4 kW
Atomizing Output	220 W	300 W
Container Volume	1000 ml	1000 ml
Air Hose	----	5 m
Power Cable	4 m	4 m
Weight	2.3 kg	8 kg
PART-NO.	PART-NO.	
	2358454	2335642

XVLP SPRAYING SYSTEM



Focus 500

Spray paints, lacquers and even stains with just one tool. Quickly and easily change spraying material in just one step. Ideally suited to small and medium sized projects*.

Focus 700

With only one device you are able to spray paints, laquers and even stains. Quick and easy change of materials and paints in just one step. Optimal suited for small and medium sized projects up to 50 m².

Front ends

The flexible front ends can be changed quick and easy with just a few moves. Thanks to the plug'n'-spray technology you are well prepared for every project.



MULTIFINISH	WALLFINISH	FINEFINISH
Recommended for all standard lacquers	Recommended for emulsions and acrylic paints	Recommended for stains
4.1 mm X-Speed tip	4.1 mm X-Speed tip	1.8 mm round nozzle
1000 ml stainless steel container	1400 ml plastic container	1000 ml stainless steel container
Standard feed tube; feed tube filter fine; feed tube filter coarse	Emulsion feed tube	Standard feed tube; 2x feed tube filter fine
Standard in package	Optional	Optional
PART-NO.	PART-NO.	PART-NO.
2335658	2335659	2335657



CAPSPRAY

The Capspray is a powerful and versatile turbine unit, spraying a wide range of coatings. Sprays stain up to finish quality latex. Rugged, portable and dependable as you would expect.

Features:

POWERFUL ATOMIZATION

Atomizes coatings with little or no thinning.

HIGH TRANSFER EFFICIENCY

Ranges up to 90%.

DUAL AIR FILTRATION

An automotive type air filter on the atomizing air side. (Available on 95, 105 and 115 models)

PRE-FILTER

On both atomizing air and cooling air sides.

BUILT-IN TOOLBOX

For needles, nozzles, air caps and nozzle wrench.

BUILT-IN CUP HOLDER

Also serves as docking station for Transfer Pump accessory.

DIRTY FILTER WARNING LIGHT

Extend the life of your turbine and maintain maximum performance with clean filters.

HVLP SPRAYING SYSTEM



Capspray 105

Note: Capspray units include one (1) Titan HVLP gun.

SPECIFICATIONS	CAPSPRAY 105
Voltage	230 V~, 50/60 Hz
Max. current consumption	9.0 A
Acceptance capacity	1836 W
Max. air ram pressure 0.55 bar RPM	21 000 RPM
Weight	15 kg
Mains cable	3 m
Container capacity	1 l
Nozzle set	No. 4 (1.8 mm)
Max. permissible coating temperature	43° C
Typical coating flow rate	0.35 l/min
Gun included	Maxum II HVLP Gun with 9 m Air Hose
CONFIGURATIONS	PART-NO.
	276047



Maxum II Gun
PART-NO.
0524041

IMPACT

Business is demanding and you need the kind of performance you expect from Titan sprayers. It's time to invest in the expanded features and performance that will make a major IMPACT on your profit margin.



Features:

FIELD SERVICEABLE FLUID SECTION

1-piece UHMWPE polyethylene packings and no cylinder to wear out.

DURALIFE BRUSHLESS HE MOTOR

- For Impact 540–1140
- Optimized for every tip size and every painter's technique.

DURALIFE BRUSHLESS HE MOTOR

- For Performance 1650e
- No pressure fluctuation, X-Lock anti-theft and resettable gallon counter and timer.

AUTOOILER

- Standard on all 440 and larger models.
- Deliver oil to the packings with the push of a button.



SPECIFICATIONS	IMPACT 400	IMPACT 440	IMPACT 540	IMPACT 740	IMPACT 1040	IMPACT 1640
Max. Delivery	1.6 l/min	2.0 l/min	2.3 l/min	3.0 l/min	4.5 l/min	5.0 l/min
Max. Tip Size (1-Gun)	0.021" (0.53 mm)	0.023" (0.58 mm)	0.024" (0.61 mm)	0.029" (0.73 mm)	0.034" (0.86 mm)	0.039" (0.99 mm)
Max. Operating Pressure	207 bar	221 bar	221 bar	221 bar	221 bar	221 bar
Motor	1.0 kW	1.035 kW	1.035 kW	1.725 kW	1.955 kW	2.19 kW
CONFIGURATIONS	PART-NO.	PART-NO.	PART-NO.	PART-NO.	PART-NO.	PART-NO.
Skid	2413461	0532035A	----	----	----	----
HighRider	----	----	0532031	0532032	0532033	2413451

IMPACT AIRLESS SPRAYERS



Impact 400

Impact 400

Dependable productivity, plain and simple. Powerful performance at an affordable price. This small pump is perfectly suited for residential, property maintenance, and small commercial applications. Works with stains, lacquers, enamels, latex, and other low and medium viscosity coatings.

Impact 440

The Impact 440 sprays of stains, lacquers, enamels and latex.



Impact 440

Impact 540

Superior performance and reliability thanks to DuraLife Brushless HE Motor. Works with stains, lacquers, enamels and latex. Larger displacement pump delivers performance unparalleled in its class. Works with stains, lacquers, epoxies, latex and block fillers.

Impact 740

Larger displacement pump delivers performance unparalleled in its class. Works with stains, lacquers, epoxies, latex and block fillers.

Impact 1640



Impact 1040

Largest displacement pump delivers performance unparalleled in its class. Works with latex, enamels, epoxies, dry fall, elastomeric and block fillers.

Impact 1640

The 1640 is our most powerful electric unit, ideal for large constructions sites for filler and paint applications.

HYDRAULIC PISTON PUMP

ELITE 3500

0,75 GPM

Recommended for stains, lacquers, enamels, latex and block fillers

► PermaStroke Technologie

Continuously stroking system eliminates deadband, delivering consistent coverage

No piston or packings to wear or replace

Lifetime warranty on fluid pump

Proven Technology with a 50 year history of pumping paint

► FlatLine Pulsation Dampener

Eliminates all pressure fluctuations in the system

► Extremely Rugged & Durable

► Permastroke Technology

No piston, packings or cylinders to wear out

One-piece inlet and outlet valves

100% field serviceable

Cartridge style valves make repair simple, fast and inexpensive. Complete Valve Kit (0537903) includes inlet and outlet valve.



► **Elite 3500 High Rider** comes with a 517 TR¹ Tip and 1/4" x 50' airless hose.

Elite 3500

The Titan Elite 3500 is a gas-powered, sealed hydraulic paint sprayer that offers a lifetime of durability. The Elite 3500 uses the revolutionary PermaStroke Technology that has no piston, packings or clutch to replace, and is backed by the Elite lifetime fluid pump warranty. The Elite 3500 is a versatile direct drive sprayer that delivers a consistent finish and is easy to operate and is field serviceable, keeping contractors on the job.

SPECIFICATIONS	ELITE 3500
Max. Delivery	0.75 GPM
Max. Tip Size	0.27"
Max. Operating Pressure	3300 PSI
Gallons Per Week	50–100
Engine	120cc Honda GX 120
Gun Included	RX-Pro
CONFIGURATIONS	PART-NO.
High Rider	0537012
Low Rider	0537013



PowrBeast 7700

The PowrBeast 7700 delivers extreme durability and the power to spray heavy bodied coatings finishing large residential or commercial jobs with ease. Take a step up in power delivering 2.0 gallons per minute means you can connect up to 4 guns and keep a larger crew spraying.

SPECIFICATIONS	POWRBEAST 7700 GAS POWERED	POWRBEAST 7700 ELECTRIC
Max. Operating Pressure	228 bar	250 bar
Weight	81 kg	85 kg
Max. delivery	7.6 l/min	6 l/min
Max. Tip Size (1 Gun)	0.047"	0.043"
Max. Tip Size (2 Guns)	0.033"	0.031"
Max. Tip Size (3 Guns)	0.027"	0.023"
Max. Tip Size (4 Guns)	0.023"	0.021"
Engine/Motor	196 CC, 5.6 Hp, 4.1 kW	3.1 kW Brushless AC
Includes	RX Pro Gun, SC+6 517 Tip, 15m x 1/4" Hose	S-3 Gun, SC6+ 527 Tip, 15m x 3/8" Hose
CONFIGURATIONS	PART-NO.	PART-NO.
	0537005	0537003

HYDRAULIC PISTON PUMP

POWRBEAST 7700

7,6 / 6 l/min

Recommended for up to 500 gallons per week

► HydraStroke Technology

Extremely efficient digitally-driven hydraulics with only one moving part

Delivers the power to spray light to extremely heavy-bodied coatings

The system is optimized to reduce heat extending its duty cycle

Simplified pump assembly for easier service

► Intelligent Design Styling

Optimized cooling system

Shroud directs maximum air flow

Radiator-style active cooling hydraulic tank

Large 12" pneumatic tires make it easier to move around job sites

► Severe Service Fluid Section

Long and slow stroking piston maximizes power and durability

Proven Titan technology with 35 years in the field

Field serviceable with easy to remove/replace fluid section



HYDRAULIC PISTON PUMP

POWRTWIN 4900 / 6900 PLUS

4,2 / 8,52 l/min

Recommended for up to 250 / 400 gallons per week.

- Slow-Stroking Hydraulic Piston**
 Maximizes the life of the fluid section.
- Accurate Pressure Control**
 Ranges from 25 to 250 bar.
- Durable**
 Longest stroking portable sprayer in the market.
- Convertible**
 Easy, tool-free convertibility for projects where gas engines are not permitted.

 2.0 HP Electric Converto Kit (506-719) sold separately.

Additional features:

- Belt Guard**
 Easy access for converting from gas to electric.
- Speeflo HydraDrive**
 Smooth, slow-stroking hydraulic drive provides extreme power and reliability.




PowrTwin 4900 Plus

PowrTwin 4900 Plus / 6900 Plus

Designed and built for contractors who are serious about completing large scale painting projects quickly and profitably. The PowrTwin Plus pumps are ideal for professionals who want the slow-stroking power and maximum durability that only a Powrtwin Plus can deliver.

SPECIFICATIONS	4900 PLUS	6900 PLUS
Max. Operating Pressure	228 bar	228 bar
Max. Tip Size (1 Gun)	0.031"	0.050"
Max. Tip Size (2 Guns)	0.028"	0.033"
Max. Tip Size (3 Guns)	0.022"	0.023"
Max. Volume Flow	4.2 l/min	8.52 l/min
CONFIGURATIONS	PART-NO.	PART-NO.
Electric Version	290032 (230 V)	-
Gas Version	290012	290013

Convertokit for conversion to electrical operation:
 PowrTwin 4900 Plus - Part.No. 0290321A (230 V)
 PowrTwin 6900 Plus - Part.No. 0290321A (230 V)




PowrTwin 6900 Plus DI

PowrTwin 6900 / 12000 Plus DI

The PowrTwin DI units with submersed foot valve create the most efficient siphon system on the market today allowing the spraying of very heavy coatings. Additionally, our EZ swing frame makes this the most efficient and convenient to use gas hydraulic system in the market today. PowrTwin 12000 Plus DI is the flagship of the line is recommended for very large scale projects where up to 6 guns may be needed, or application of very heavy coatings.

SPECIFICATIONS	6900 PLUS DI	1200 PLUS DI
Max. Operating Pressure	228 bar	248 bar
Max. viscosity	50.000mPa s	65.000mPa s
Max. volume flow	6.6 l/min	11.9 l/min
Max. Tip Size (1 Gun)	0.041"	0.059"
Max. Tip Size (2 Guns)	0.029"	0.040"
Max. Tip Size (3 Guns)	0.021"	0.034"
Max. Tip Size (4 Guns)	0.017"	0.030"
Max. Tip Size (5 Guns)	-	0.026"
CONFIGURATIONS	PART-NO.	PART-NO.
Electric Version	290029 (230 V)	290034 (400 V)
Gas Version	290021	290023

HYDRAULIC PISTON PUMP

POWRTWIN 6900 / 12000 PLUS DI

7,6 l/min

Recommended for large scale projects.

- Direct Immersion**
 The 6900 Plus DI has a submerged foot valve which you allows you to siphon heavy viscosity coatings.
- Power Multiple Spray Guns**
 The 12000 Plus DI has an industry leading 11.9 l/min giving it the ability to power up to 6 spray guns.
- Easy to Convert**
 Easily convert to gas or electric power without any tools.
- Belt Guard**
 Easy access for converting from gas to electric.
- EZ Swing Frame**
 Allows for less spillage during paint changes and lower height (and center of gravity) of unit for easy transportation.



POWRLINER

Titan offers line strippers that incorporate hydraulic pump technology for heavy-duty use as well as clutch-driven machines that are perfect for entry level projects.



Hydraulic pump (p. 23 - 27)

Titan offers multiple PowrLiners that incorporate hydraulic pump technology for heavy-duty, long-term use on medium, large and giant scale striping projects.

SPEEFLO HYDRADRIE

- Reliable, smooth, slow-stroking hydraulic drive greatly extends the operational life of the sprayer
- External-hydraulic fluid porting with NEW, upgraded fittings allows for quick troubleshooting and simplified maintenance
- SAE o-ring fitting and precision rod alignment ensure maximum pump life

SEVERE SERVICE 900 PUMP

- Cylinder and piston rod are tempered with a proprietary heat-treating process that increases pump life up to 150% longer than competitive pumps
- Self-adjusting packings prevent over-tightening and help prevent premature wear
- Foot valve removes easily for faster cleaning and easy maintenance
- Reversible inlet and outlet seats have twice the lifespan of ordinary outlet seats and extra large ball valves ensure efficient pump operation and longer unit life
- Heavy-duty prime/spray valve ensures consistent, increased flow and faster pump priming

Mechanical pump (p. 22; 26-27)

Titan's clutch-driven PowrLiners are a perfect entry level stripper for smaller and medium-sized striping projects.

DURABLE FLUID SECTION

- Patented, one-piece modular pump housing design makes routine service quick and easy – lasts up to 30% longer than competitive line strippers
- One-piece, self-adjusting static packings with 5 lip wiper last up to 50% longer; lifetime cylinder warranty means you spray more and worry less
- Exclusive fluid section design requires no cylinder; fewer wear parts reduces maintenance cost
- Access and clean the ball valves without damaging packings or removing fluid section
- Stainless steel rotating ball valves keep debris from sticking to minimize downtime and maximize performance
- Reversible inlet and outlet seats last twice as long as standard seats

RELIABLE GAS ENGINE

- Proven engine technology
- Quiet operation
- Easy starting

HYDRAULIC DRIVEN STRIPERS

HYDRAULIC PUMP TECHNOLOGY THE SPRAYERS OF CHOICE

These high-performance, heavy-duty paint sprayers use long-stroke, slow-cycling hydraulic piston technology for economical operation and dependable, long-term line spraying. The sprayers of choice for serious contractors with large-scale contractors.



PowrCenter

Designed with convenient and easy-to-use controls with features like tip holder, 12 V-phone charging port and cup holder.

(Phone, charger and cup not included.)



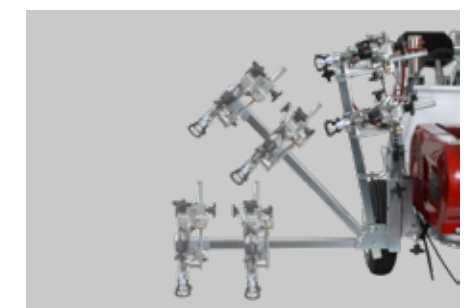
Speeflo HydraDrive

Smooth, slow-stroking hydraulic drive provides extreme power and reliability.



Severe Service 900 Pump

Cylinder and piston rod are tempered with a proprietary heat-treating process that increases pump life 150% over competitive pumps. And self-adjusting packings resist over-tightening and help prevent premature wear.



SmartArm

Built to pivot and lift, making line adjustments and transportation quick and easy.



DeadLock Handlebars

Easily adjust handlebars on three planes; in and out, up and down and pivot forward or back.

HYDRAULIC DIAPHRAGM PUMP

POWRLINER
3500

2,8 l/min

Recommended for medium-sized projects on all parking lots and athletic fields.

► PermaStroke Technologie

Continuously stroking system eliminates deadband delivering consistent lines.

No piston or packings to wear or replace

Proven Technology with a 50 year history of pumping paint

► FlatLine Pulsation Dampener

Eliminates all pressure fluctuations in the system

► Extremely Rugged & Durable

► Delivers a Perfectly Straight Line



Der PowrLiner 3500 wird mit der RX-80 Airless Spritzpistole geliefert.

LOW-WEAR
DIAPHRAGM PUMP



PowrLiner 3500

The PowrLiner 3500 was developed specifically for continuous daily use on asphalt, sports line marking and grassed areas delivering a spray pattern just like a hydraulic pump. It’s the perfect line marking machine for companies looking for a middle class sprayer. It’s more suited to jobs where a hydraulic pump wouldn’t be considered economical.

SPECIFICATIONS	POWRLINER 3500
Max. Delivery	2.8 l/min
Max. Tip Size - 1-Gun	0.027" (0.686 mm)
Max. Operating Pressure	227 bar
Weight	87 kg
Engine - Gas	120 cm³ Honda Motor; 2.98 kW (4 PS); with Low-Oil Alert
PART-NO.	0537015

PowrCenter

Designed with convenient and easy-to-use controls.

DeadLock
Handlebars

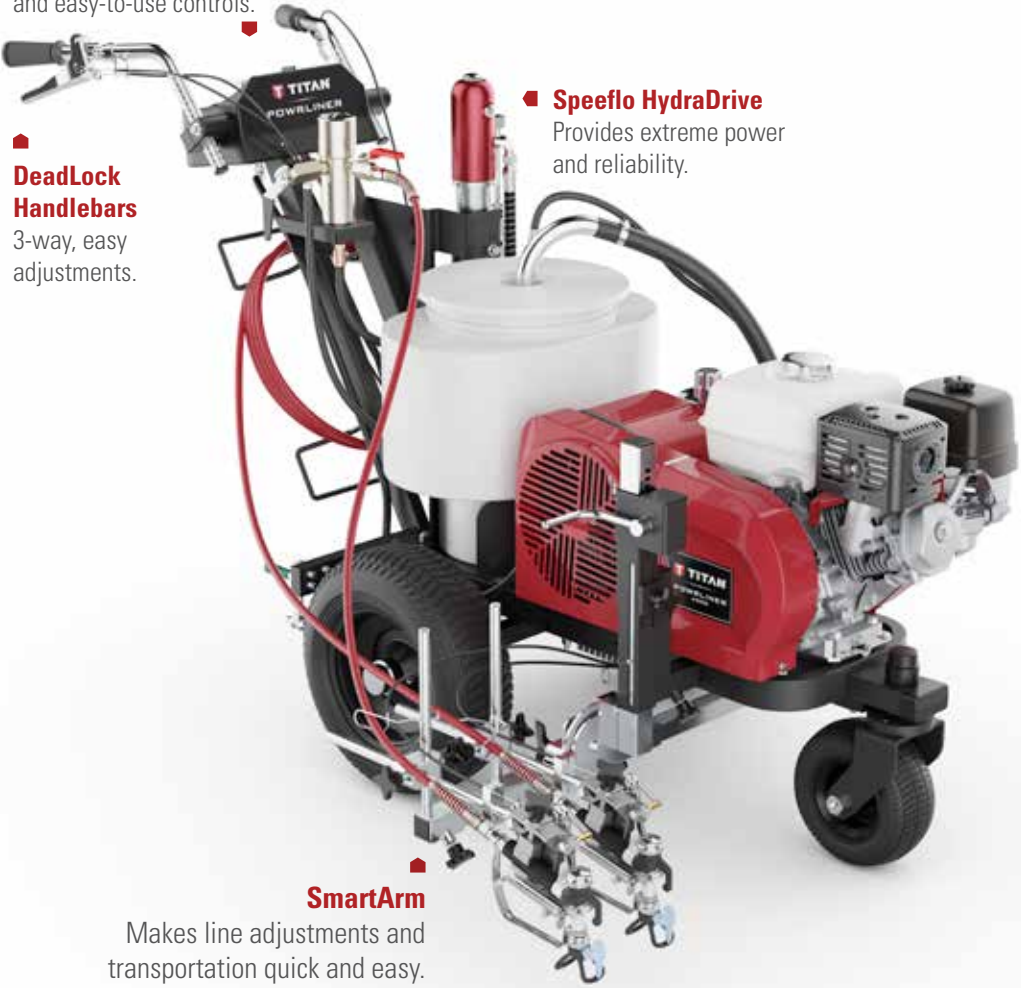
3-way, easy adjustments.

Speeflo HydraDrive

Provides extreme power and reliability.

SmartArm

Makes line adjustments and transportation quick and easy.



PowrLiner 4955

Designed and built for contractors who are serious about completing medium to large scale striping projects quickly and profitably. PowrLiner 4955 is the first step in hydraulic strippers where power and long-term, heavy duty operation are the difference between a business that makes money and one that does not.

SPECIFICATIONS	POWRLINER 4955
Max. Delivery - Gas	5.7 l/min
Max. Delivery - Electric	4.2 l/min
Max. Tip Size - 1-Gun	0.038" (0.965 mm)
Max. Tip Size - 2-Guns	0.028" (0.711 mm)
Max. Operating Pressure	227 bar
Engine - Gas	120 cm³; Honda Motor; 2.98 kW (4 PS); with Low-Oil Alert
PART-NO.	0290052H

HYDRAULIC PISTON PUMP

POWRLINER
4955

5,7 l/min

Recommended for full-time duty on parking lots and athletic fields.

► SmartArm

Can be positioned to spray on left, right, front or rear of striper.

► Precise Pressure Control

From 27 to 227, for spraying lightbodied coatings all the way up to low- VOC striping paints.

► Heavy-Duty Frame

Epoxy-finished frame resists harsh solvents and corrosion.

► Second Gun Kit

Complete with S-3 gun, hose and tip kit for wider or dual lines.

► 45 Liter Paint Hopper

► Pneumatic Tires

or shock absorption.

► Convenient Hose Rack

Keeps hose conveniently stored on the rear of the striper.

Electric Convertibility

► Electric Converto Kit (230 V)
0290117A

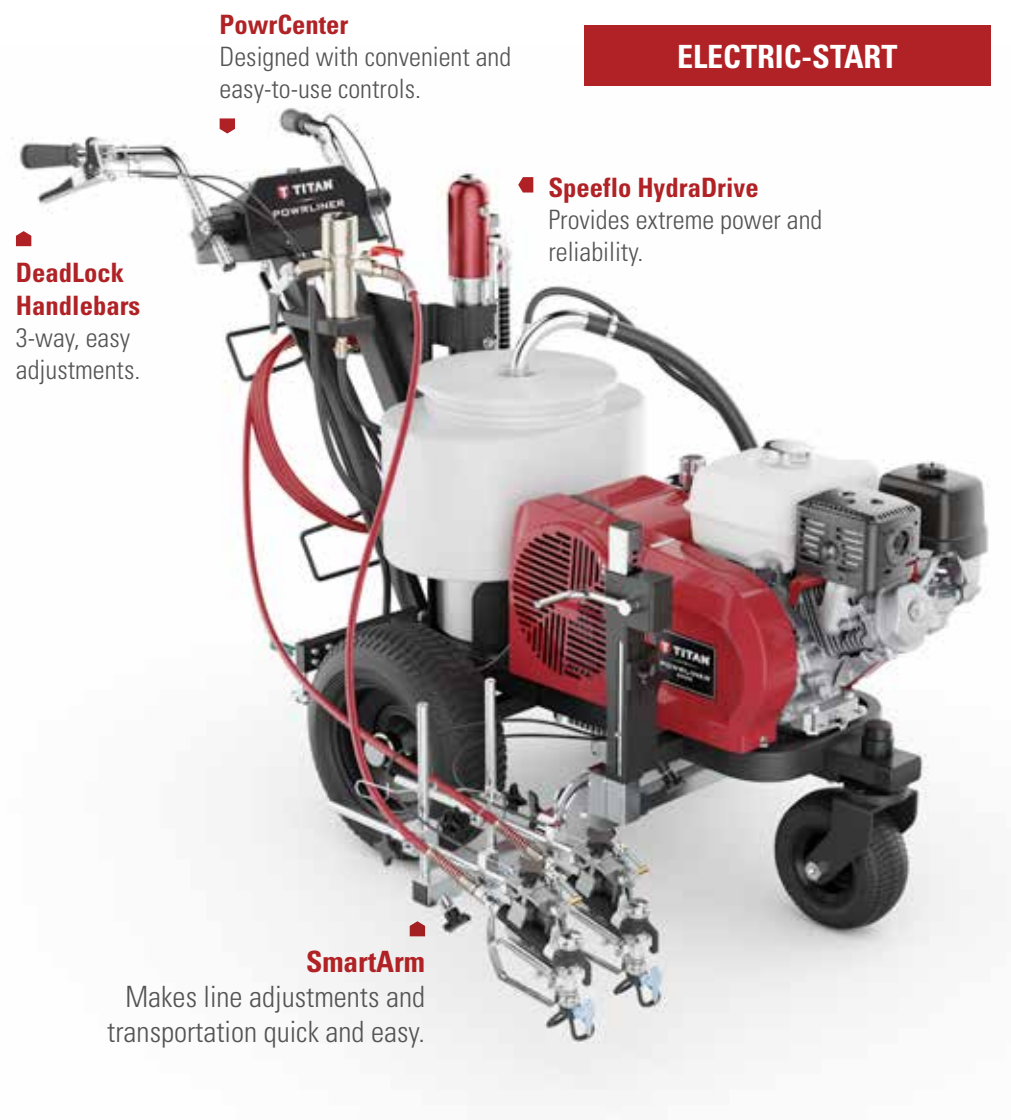
Easy, tool-free convertibility from gaspow-er to electric power for projects where gas engines are not permitted.
For use only with PowrLiner 4950 and 4955.

HYDRAULIC PISTON PUMP

POWRLINER

6955/8955

8,5 / 9,5 l/min



DeadLock Handlebars
3-way, easy adjustments.

PowrCenter
Designed with convenient and easy-to-use controls.

ELECTRIC-START

Speeflo HydraDrive
Provides extreme power and reliability.

SmartArm
Makes line adjustments and transportation quick and easy.

PowrLiner 6955/8955

Larger projects require more power and output. PowrLiner 6955 and 8955 line strippers are the workhorse machines of the industry, designed for ease of use and simple operation on major projects that require maximum performance with minimum downtime and maintenance.

SPECIFICATIONS	POWRLINER 6955	POWRLINER 8955
Max. Delivery - Gas	8.5 l/min	9.5 l/min
Max. Delivery - Electric	----	----
Max. Tip Size - 1-Gun	0.050" (1.27 mm)	0.054" (1.372 mm)
Max. Tip Size - 2 Guns	0.033" (0.838 mm)	0.038" (0.965 mm)
Max. Operating Pressure	227 bar	227 bar
Engine - Gas	160 cm³; Honda Motor; 4.04 kW (5.5 PS); 100 W; with Low-Oil Alert	200 cm³; Honda Motor; 4.78 kW (6.5 PS); 100 W; with Low-Oil Alert
PART-NO.	0290053H	0290054H

TECHNICAL DATA - LINE STRIPERS

	POWRLINER 3500	POWRLINER 4955	POWRLINER 6955	POWRLINER 8955
Part Number - 1-Gun	0537015	----	----	----
Part Number - 2-Gun	----	0290052H	0290053H	0290054H
Max Delivery (l/min) - Gas	2.8	5.7	8.5	9.5
Max Delivery (l/min) - Electric	----	4.1	----	----
Max Tip Size. 1-Gun - Gas	0.027" (0.686 mm)	0.036" (0.914 mm)	0.050" (1.27 mm)	0.054" (1.372 mm)
Max Tip Size. 2-Guns - Gas	----	0.028" (0.711 mm)	0.033" (0.838 mm)	0.038" (0.965 mm)
Max Tip Size. 1-Gun - Electric	----	0.031" (0.787 mm)	----	----
Max Tip Size. 2-Guns - Electric	----	0.023" (0.584 mm)	----	----
Max. Operating Pressure (bar)	227	227	227	227
Electric Motor	----	2 PS (1.5 kW)	----	----
Max. Hose Length	91.4 m	91.4 m	91.4 m	91.4 m
Power Source	120 cm³ Honda Motor 2.98 kW (4 PS). with Low-Oil Alert	120 cm³ Honda Motor 2.98 kW (4 PS). with Low-Oil Alert	160 cm³ Honda Motor 4.04 kW (5.5 PS). 100 W. with Low-Oil Alert	200 cm³ Honda Motor 4.78 kW (6.5 PS). 100 W. with Low-Oil Alert
Pump Drive	Hydraulic	Hydraulic	Hydraulic	Hydraulic
Line Width Range	5 - 30 cm	5 - 60 cm	5 - 60 cm	5 - 60 cm
Cycle Rate	----	23 per litre	15 per litre	11 per litre
Electrical System	----	----	12 Watt	12 Watt
Paint Outlet - Filter Element	60 Mesh	60 Mesh	60 Mesh	60 Mesh
Paint Outlet - Filter Area	----	116 cm2	116 cm2	116 cm2
Weight - Unit (kg)	87	148.8	151.5	153.8
Weight - Crated (kg)	135	184	184	184
Dimensions (H x W x L) - Unit	100.3 x 82.5 x 165 cm	104 x 79 x 152 cm	104 x 79 x 152 cm	104 x 79 x 152 cm
Dimensions (H x W x L) - Crated	----	125 x 84 x 163 cm	125 x 84 x 163 cm	125 x 84 x 163 cm
Gun Included	RX-80	S-3	S-3	S-3
TR¹ Line Striping Tip Included	419 (10-cm-line by 0.483-mm-orifice)	419 (10-cm-line by 0.483-mm-orifice)	419 (10-cm-line by 0.483-mm-orifice)	419 (10-cm-line by 0.483-mm-orifice)
Airless Hose Included	0.6 cm x 15 m	0.6 cm x 15 m	0.6 cm x 15 m	0.6 cm x 15 m
Repair Kit - Pump	----	107-051	144-050	144-050
Repair Kit - Gun	----	550-275	550-275	550-275
Operator's Manual	537832	0290369	0290369	0290369
Optional Electric Motor Kit	----	0290117A	----	----

Additional Features:

► **Low Oil Alert**



All three large PowrLiners include S-3 Stainless Steel spray gun with premium TR¹ line striping tip.

LAZYLINER

Take a load off and increase productivity up to four times. An economical way to grow your business.



LazyLiner Elite

- 200-Watt lamp coil charging system
- Engine protection bumper bar
- Heavy-duty pneumatic tires (16" x 6.5")
- Multi-position seat (forward/back, side to side)
- Height adjustable foot pedals
- Compatible with PowrLiner 2850–8955



LazyLiner Pro

- Standard pneumatic tires (16" x 4.5")
- Multi-position seat (forward/back, side to side)
- Height adjustable foot pedals
- Compatible with PowrLiner 2850–8955

SPECIFICATIONS	LAZYLINER ELITE	LAZYLINER PRO
Engine - Gas	211 cm³ Subaru OHV/OHC	169 cm³ Subaru OHC
Start	Pull or Electric	Pull
Speed - Forward	0 - 19 km/h	0 - 19 km/h
Speed - Reverse	0 - 11 km/h	0 - 11 km/h
PART-NO.	0290040H	0290041H

LazyLiner tray, hitches and bumpers are sold separately. See page 14 for details.

LINE STRIPER ACCESSORIES

LINE STRIPER USEFUL ACCESSORIES



WindGuard Spray Shield

Handibead Bead Dispenser



Second Gun Kit



WindGuard Spray Shield 0290623

Spray shield protects spray pattern from wind, minimizing over-spray. Works well when applying diluted athletic field marking paints. Adjustable for easy “on the fly” line width changes – (10, 15 oder 20 cm) and is easily removed from sprayer.

- Attaches to any Titan PowrLiner and most competitive models
- Spring loaded shields promote forgiveness on uneven surfaces
- Lightweight – only 2,5 kg

HandiBead Bead Dispenser 0290953A

Apply glass beads with consistency and accuracy. Eliminates hand tossing glass beads on stop bar or crosswalk applications.

- Adjustable diffuser can disperse material up to 38 cm wide
- Includes 3 nozzles (small, medium and large)

Second Gun Kit

These gun kits come complete with mounting bracket, airless gun, 1,8 m x ¼” hose and line striping tip. Mounts on either side of 4950, 6950 and 8950 PowrLiner.

DESCRIPTION	PART-NO.
S-3 Gun Kit	759-138

Glass Bead Dispensing Systems

Includes hopper, hose and dispenser.



DESCRIPTION	PART-NO.
1-Gun Kit (10 - 15 cm)	424-826
2-Gun Kit (10 - 15 cm)	424-836
1-Gun Kit (30 cm)	424-840
2-Gun Kit (30 cm)	424-841
Add a Second Dispenser to your 1-Gun Kit Second Dispenser with Hose (10 - 15 cm)	424-816

Compatible with: 4950, 4955, 6950, 6955, 8950, 8955, 4900XLT, 6900XLT and 8900XLT. LazyLiner and PowrLiner sold separately.

SureTrak Floating Gun Kit 759-120

Keeps the gun at the proper height from the surface for perfect lines over rough terrain.

- Works great on pavement, grass and turf
- Attaches to PowrLiner 4950, 4955, 6950, 6955, 8950 and 8955



SureTrak Floating Gun Kit



LazyLiner Tray

LazyLiner Tray

Use this attachable tray system as an option for carrying around additional items.

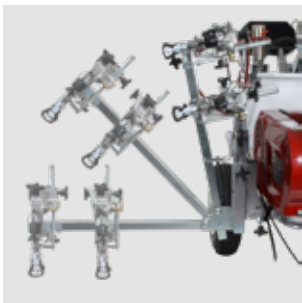
- For use on the LazyLiner Pro and Elite

DESCRIPTION	PART-NO.
LazyLiner Pro Tray (must be added bumper 0290646Z)	0290645Z
LazyLiner Elite Tray	0290645Z
LazyLiner Elite Tray (for use with LazyLiners equipped with Honda Engine)	2413480

SmartArm Assembly 0290382

Built to make line adjustments and transportation quick and easy.

- Pivots down for spraying and up for transportation/storage
- Locks in at any angle for curb striping
- Adjust gun height (fan pattern) up/down with the turn of a lever
- Automatically centers spray arm for easy set-up
- Graduated to return to your preferred spray position



SmartArm Pivot System



SmartArm Lift System

Striper Add-On Accessories

RECOMMENDED GUNS	
DESCRIPTION	PART-NO.
RX 80 (2-Finger-Grip; incl. tip)	0538008
RX 80 (4-Finger-Grip; incl. tip)	0538007
RX Pro (2-Finger-Grip; incl. tip)	0538022
S-3 Gun; incl. tip	0550060

UPGRADES	
DESCRIPTION	PART-NO.
45-Liters Hopper	759-130
Polyethylene 19-Liter Pail Cover	759-147
Turf Kit for PowrLiners 4955–8955	759-155
LinePainter	750-150
Cleaning Kit	10-500-P
PointerLine Visor	424-620
Hopper for PL 3500	0341267
20-Liters Hopper	0341266
Piston lube 0.12 l	0314481
Piston lube 0.24 l	0314480
Piston lube 0.94 l	0700926
Coolflo hydraulic oil 0.94 l	0430362
Coolflo hydraulic oil 3.78 l	0430361

Hitches and Bumpers

DESCRIPTION	KOMPAKT	PRO	ELITE
	PART-NO.		
PowrLiner 2850	----	0290043Z	0290043Z
PowrLiner 3500	----	537935	537935
PowrLiner 4950, 4900xlt, 6900xlt, 8900xlt	0290047Z	0290047Z	0290047Z
PowrLiner 6950, 8950	0290048Z	0290048Z	0290048Z
PowrLiner 4955, 6955, 8955	----	0290180	0290180
Graco 3900 und Up	0290050Z	0290050Z	0290050Z
Bumper / Engine Protection Bar	----	0290646Z	Included

The drivers are not shipped with a hitch; use chart to identify which hitch to order.



ENGINEERED FOR PERFECT LINES

The Industry’s Best Performing Fan Pattern

- Sprays razor sharp lines
- Consistent line width from the first gallon to the last

Longest Lasting Striping Tip in the Market

- Uniform film build for the life of the tip
- Less wasted paint equals more profit

New Easy-to-Read Tip Sizes

- 421= 4” (10 cm) wide line (at 15 cm above the surface) with a 0,021” (0,533mm) orifice



TR1 Line Striping Tip

TR1 Line Striping Tips 697-XXX

		ORIFICE SIZE (INCHES)													
FAN PATTERN WIDTH	INCHES	MM	.013	.015	.017	.019	.021	.023	.025	.027	.029	.031	.035	.039	.043
	2	51	213	215	217	219									
	4	102	413	415	417	419	421	423	425	427	429	431	435	439	443
	6	152		615	617	619	621	623	625	627	629	631	635	639	643
	8–10	203–254					821	823	825	827	829	831	835	839	843
	Flow (GPM)	---	0,18	0,24	0,31	0,39	0,47	0,57	0,67	0,78	0,91	1,03	1,32	1,64	1,99
	Flow (LPM)	---	0,68	0,91	1,17	1,47	1,78	2,15	2,53	2,95	3,44	3,89	4,99	6,20	7,52

RX-80 AIRLESS GUN

- Comfort Grip: Ergonomic design brings added comfort
- Longer Life Packing Kit: Lasts longer with improved performance
- Onboard Tools: Smart tools that make jobsite life easier
- Comes with two or four-finger trigger
- Pressure rated at 3600 PSI (24.8 MPa)

DESCRIPTION	PART-NO.
RX-80 Airless Gun, Four-Finger without Tip	0538009
RX-80 Airless Gun, Two-Finger without Tip	0538014
RX-80 Airless Gun, Four-Finger with TR¹	0538005
RX-80 Airless Gun, Two-Finger with TR¹	0538006
RX-80 Airless Gun, Four-Finger with SC-6+	0538007
RX-80 Airless Gun, Two-Finger with SC-6+	0538008
RX-80 Airless Gun, Four-Finger, Hose and Tip Kit with TR¹*	0538010
RX-80 Airless Gun, Four-Finger, Hose and Tip w/ SC-6+*	0538011
RX-80 Airless Gun, Hose and Tip Kit (8-pk)	2403960
RX-80 Repair Kit	0538215

*Includes additional 3' whip hose and a 2-finger trigger.

RX-PRO AIRLESS GUN

- Ultra-light Trigger: 30% lighter than the competitors trigger pull decreasing fatigue.
- FingerPrint Grip: Customize the grip to comfortably fit any painter's hand.
- Infinity Packing: 2X the gun life by reversing the seat and changing the ball.
- Onboard Tools: Smart tools that make jobsite life easier
- Comes with both two and four-finger trigger
- Pressure rated at 3600 PSI (24,8 MPa)

DESCRIPTION	PART-NO.
RX-Pro Airless Gun with TR¹ Tip	0538020
RX-Pro Gun, Hose, Whip & Tip Kit	0538022
RX-Pro Gun, Hose & Tip Kit (8-pk)	0538030
RX-Pro Gun, Hose, Whip & HEA Tip Kit	0538033
RX-Pro Ball Valve	0538221
RX-Pro Seat	594-033
RX-Pro Packing Seal Assy.	0538204A



FingerPrint Grip

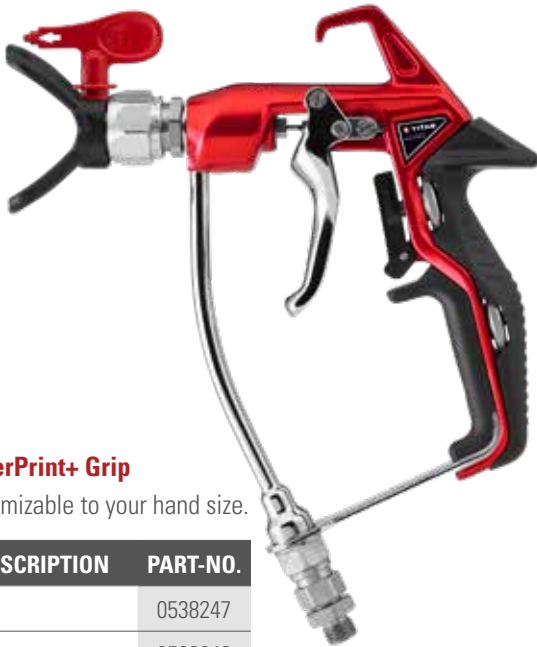
Customizable to your hand size.

DESCRIPTION	PART-NO.
Small	0538217
Medium	0538218
Large	0538219

RX-APEX AIRLESS GUN

- All-Day Trigger: 28% lighter trigger pull force and 74% less hold force.
- FingerPrint+ Grip: Fully adjustable grip delivers maximum customization.
- Infinity Packing: 2X the gun life by reversing the seat and changing the ball.
- Free-Flow Swivel: Only direct feed airless gun with built-in swivel.
- Comes with two-finger trigger
- Pressure rated at 5000 PSI (34,5 MPa)

DESCRIPTION	PART-NO.
RX-Apex, Non-Filtered Airless Gun with TR¹ Tip	0538070
RX-Apex, Filtered Airless Gun with TR¹ Tip	0538075
RX-Apex, Non-Filtered Airless Gun, Hose & TR¹ Tip Kit	0538072
RX-Apex, Non-Filtered, High Pressure Airless Gun, Hose & TR¹ Tip Kit	0538073
RX-Apex, Filtered Airless Gun, Hose & TR¹ Tip Kit	0538076
RX-Apex, Filtered Airless Gun, Hose & TR¹ HEA Tip Kit	0538077



FingerPrint+ Grip

Customizable to your hand size.

DESCRIPTION	PART-NO.
Small	0538247
Medium	0538248
Full	0538256

S-SERIES: SPRAY SPECIALIZED COATINGS WITH EASE

S-3 Airless Gun

- In-handle filter
- Easy four-finger trigger pull
- 1/4" swivel reduces hose kinks
- Pressure rated at 3900 PSI (26,9 MPa)



DESCRIPTION	PART-NO.
S-3 Gun with TR1 Tip	0550060
S-3 Gun, Hose and Tip Kit	0550065
S-3 Repair Kit	550-275

S-7 Airless Gun

- In-handle filter
- Easy four-finger trigger pull
- Pressure rated at 7700 PSI (53,1 MPa)
- Includes 517 TR¹ high pressure, heavy-duty reversible tip and guard
- Available in two swivel sizes, swivel reduces hose kinks



DESCRIPTION	PART-NO.
S-7 Gun with 1/4" Swivel	550-260
S-7 Gun with 3/8" Swivel	550-270
S-7 Repair Kit	550-276

FOR HEAVY AND HGH PRESSURE COATINGS

M-4 / M-8 Mastic Guns

- Straight line fluid passage allows max flow rate
- Angled handle for increased comfort
- Adjustable needle packing prolongs the life of critical wear parts
- Swivel allows freedom of movement without hose kinking
- Lightweight metal construction

DESCRIPTION	PART-NO.
M-4 Mastic Gun	0289013
M-8 Mastic Gun	0289014



THE INDUSTRY LEADER IN TIP TECHNOLOGY

Airless spray tips are a key component to the successful operation of an airless spray system. They define the spray pattern, control the flow, atomize the coating and ultimately tell the pump how hard it must work. A proper understanding of airless tips is critical to the success of any airless application.



Tip Characteristics

It is important to remember that the orifice size, in conjunction with the fan-width, determines the spray characteristics of the tip.

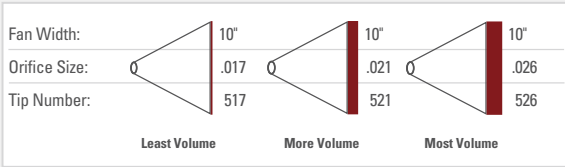
Tip Wear

When beginning a project, choosing the right tip size and fan width will determine both coating consumption and production time. If the tip size is wrong – either by choice or through wear – mil thicknesses will be too heavy and the finish will be unprofessional.

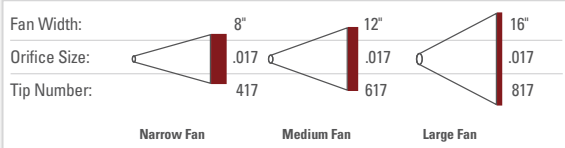
The spray pattern chart demonstrates what happens as a tip wears. As wear occurs, the pattern size decreases and the orifice size increases. You will have to make more passes to cover the same area. There is no standard rate of tip wear due to the variation of the abrasiveness of all coatings.

Examples for Understanding Airless Tips





Example A:
The larger the orifice with the same fan width, the greater the volume of paint applied to the area.







Example B:
The larger the fan width with the same orifice means the same amount of material is being applied over a greater area. The result is less volume of paint per square cm.



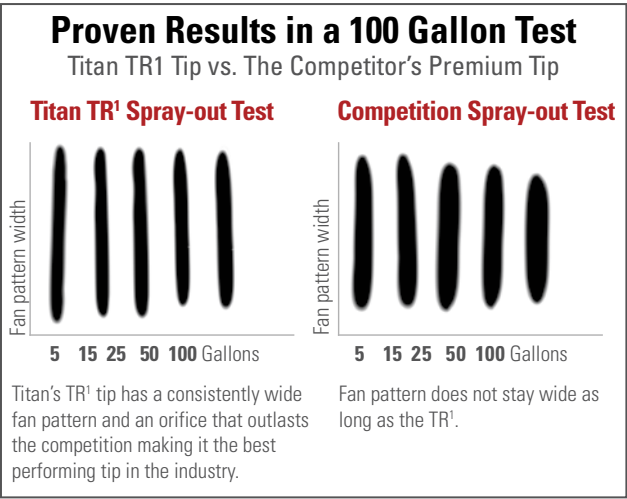
How a Tip Fan Pattern Typically Wears

SC-6+ WITH 517 TIP			
SPRAY PATTERN WIDTHS			
New 517	Worn to 419	Worn to 321	Worn to 223
			
FLOW RATES			
.31 gpm (1.17 lpm)	.39 gpm (1.47 lpm)	.47 gpm (1.78 lpm)	.57 gpm (2.15 lpm)
FLOW RATE INCREASE			
0 %	26 %	52 %	84 %

TR¹ WITH 517 TIP			
SPRAY PATTERN WIDTHS			
New 517	Worn to 519	Worn to 521	Worn to 523
			
FLOW RATES			
.31 gpm (1.17 lpm)	.39 gpm (1.47 lpm)	.47 gpm (1.78 lpm)	.57 gpm (2.15 lpm)
FLOW RATE INCREASE			
0%	26%	52%	84%

PREMIUM TR¹ REVERSIBLE TIP

- The best overall performing tip in the industry
- Fan pattern stays wider longer
- An orifice that outlasts competitive tips delivering consistent film thickness and less wasted paint
- Fits all Titan and most other industry spray gun guards



TR¹ Tips 695-XXX

			ORIFICE SIZE (INCHES)									
	INCHES	MM	.009	.011	.013	.015	.017	.019	.021	.025	.027	
FAN PATTERN WIDTH	2-4	51-102										
	4-6	102-152	209	211	213	215	217					
	6-8	152-203		311	313	315	317					
	8-10	203-254		411	413	415	417					
	10-12	254-305			513	515	517	519	521	525		
	12-14	305-356									627	
	Flow (GPM)	---	0.09	0.12	0.18	0.24	0.31	0.39	0.47	0.67	0.78	
	Flow (LPM)	---	0.34	0.45	0.68	0.91	1.17	1.47	1.78	2.53	2.95	

Maximum Working Pressure: 5000 PSI (34.5 MPa)



TR¹ Reversible Tip



TR¹ High Pressure Tip

TR¹ High Pressure Tips 696-XXX

			ORIFICE SIZE (INCHES)																	
	INCHES	MM	.007	.009	.011	.013	.015	.017	.019	.021	.023	.025	.027	.029	.031	.033	.035	.037	.039	.043
FAN PATTERN WIDTH	2-4	51-102	107	109	111	113	115	117	119											
	4-6	102-152		209	211	213	215	217	219	221	223	225	227							
	6-8	152-203		309	311	313	315	317	319	321	323	325	327	329	331	333	335	337	339	
	8-10	203-254		409	411	413	415	417	419	421	423	425	427	429	431	433	435		439	443
	10-12	254-305		509	511	513	515	517	519	521	523	525	527	529	531	533	535	537	539	543
	12-14	305-356		609	611	613	615	617					627							655
	14-16	356-406						717	719	721	723	725	727		731	733	735			
	16-18	406-457						817	819	821						835	837	839	843	
	18-20	457-508									923	925	927		931		937			
	Flow (GPM)	---	0.05	0.09	0.13	0.18	0.24	0.31	0.39	0.47	0.57	0.67	0.78	0.91	1.03	1.17	1.32	1.40	1.64	1.99
	Flow (LPM)	---	0.19	0.34	0.45	0.68	0.91	1.17	1.47	1.78	2.15	2.53	2.95	3.44	3.89	4.42	4.99	5.29	6.20	7.52

Maximum Working Pressure: 7700 PSI (53.1 MPa)

TR¹ HEA TIP



Perfect for interior and exterior residential and commercial wall spraying.



The Right Mix For Production 330-XXX

FAN PATTERN WIDTH	ORIFICE SIZE (INCHES)							
	INCHES	MM	.011	.013	.015	.017	.019	.021
	4-6	102-152	211	213				
	6-8	152-203	311	313				
	8-10	203-254	411	413	415	417		421
	10-12	254-305			515	517	519	521
	12-14	305-356			615	617	619	621
	Flow (GPM)	---	0.09	0.12	0.18	0.24	0.31	0.47
	Flow (LPM)	---	0.34	0.45	0.68	0.91	1.17	1.79

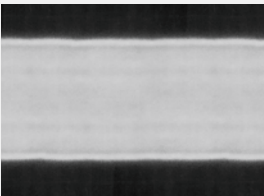
Maximum Working Pressure: 5000 PSI (34,5 MPa)



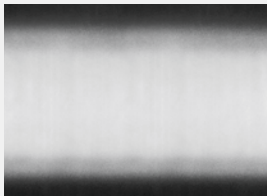
Revolutionary Low Pressure Technology

- Optimized to spray all architectural paints and coatings at 1,000 psi at production speed
- Decreases overspray up to 55% allowing contractors to spray more
- Less pressure equals less stress extending pump life and extending time between repacks
- Two times the life of a standard reversible tip
- Patented design

Highly Efficient Fan Pattern



Latex paint through a standard 517 tip at 1,000 PSI



Latex paint through a HEA 517 tip at 1,000 PSI

- Feathered edge provides consistent coverage
- More forgiving pattern that decreases runs and drips
- Less kickback when triggered providing more control and less overspray
- Fits all industry standard guards

Maximize the Performance of your HEA Tip



HEA Gauge Assembly Kit 0580495

HIGH QUALITY SC-6+ REVERSIBLE TIP

- The industry's longest-lasting orifice
- Up to 22% wider fan pattern
- Fits all Titan and most industry standard guards



SC-6+ Synergy Fine Finishing Tips 671-XXX

FAN PATTERN WIDTH	INCHES	MM	ORIFICE SIZE (INCHES)			
			.008	.010	.012	.014
	4-6	102-152	208	210	212	214
	6-8	152-203	308	310	312	314
	8-10	203-254	408	410	412	414
	10-12	254-305		510	512	
	12-14	305-356			612	
	Flow (GPM)	---	0.07	0.11	0.16	0.21
	Flow (LPM)	---	0.26	0.42	0.60	0.79

Maximum Working Pressure: 5000 PSI (34.5 MPa)

SC-6+ Widespray Tips 661-XXX

FAN PATTERN WIDTH	INCHES	MM	ORIFICE SIZE (INCHES)									
			.019	.021	.023	.025	.027	.029	.031	.033	.035	.037
	24-26	610-660	1219	1221	1223	1225	1227	1229	1231	1233	1235	1237
	Flow (GPM)	---	0.39	0.47	0.57	0.67	0.78	0.91	1.03	1.17	1.32	1.47
	Flow (LPM)	---	1.47	1.78	2.15	2.53	2.95	3.44	3.89	4.42	4.99	5.56

Maximum Working Pressure: 5000 PSI (34.5 MPa)

SC-6+ Tips 662-XXX

FAN PATTERN WIDTH	INCHES	MM	ORIFICE WIDTH (INCHES)															
			.007	.009	.011	.013	.015	.017	.019	.021	.023	.025	.027	.029	.031	.033	.035	.039
	2-4	51-102	107	109	111	113	115	117										
	4-6	102-152	207	209	211	213	215	217	219	221	223	225	227	229	231	233	235	
	6-8	152-203	307	309	311	313	315	317	319	321	323	325	327	329	331	333	335	
	8-10	203-254	407	409	411	413	415	417	419	421	423	425	427	429	431	433	435	439
	10-12	254-305		509	511	513	515	517	519	521	523	525	527	529	531	533	535	539
	12-14	305-356		609	611	613	615	617	619	621	623	625	627	629	631	633	635	639
	14-16	356-406							719	721					731		735	
	16-18	406-457								821					831			
	Flow (GPM)	---	0.05	0.09	0.13	0.18	0.24	0.31	0.39	0.47	0.57	0.67	0.78	0.91	1.03	1.17	1.32	1.64
	Flow (LPM)	---	0.19	0.34	0.45	0.68	0.91	1.17	1.47	1.78	2.15	2.53	2.95	3.44	3.89	4.42	4.99	6.20

Maximum Working Pressure: 5000 PSI (34.5 MPa)

TITAN TIPS PAINT MORE

Titan Tips Vs. the Competition

Long-lasting orifice gives you more usable tip life, spraying a consistent film thickness and wasting less paint.



*Assumes consistent application method

A GUARD FOR EVERY TIP

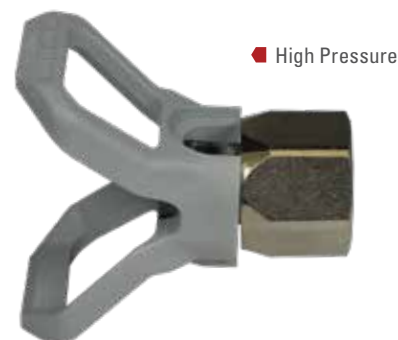
Titan tip guards are designed to maximize airflow with minimal overspray. With a guard for every tip and the universal fitting which matches most industry standard guns we have you covered.



No Build Guard (7/8") 0289228

Aerodynamic dimple design allows for better airflow and less paint build up. Seal cavity on safety guard has large "flats" for quick and easy installation of seal.

- Rotate guard without loosening from gun
- No tools needed for installation
- Interchangeable with most industry spray guns
- Pressure rated at 5000 PSI (34.5 MPa)



High Pressure Tip Guard (7/8") 661-027

- Interchangeable with most industry spray guns
- Pressure rated at 7700 PSI (53 MPa)



Seals

DESCRIPTION	PART-NO.
Metal Retainer	651-040
Black Seal, Latex	651-042
White Seal, Solvent Resistant	651-020
White Seal, Solvent Resistant (6-pack)	661-021
Seal and Retainer Kit, Solvent Resistant (5-pack)	661-020
Seal and Retainer Kit, Solvent Resistant (12-pack)	651-060
Gasket Kit, 1/8" (12-pack)	711-612A
Gasket Kit, 1/16" (12-pack)	711-606



Sold exclusively through professional distributors
Visit us at: titantool-international.com



All information contained in this brochure is based on the latest information available at the time of printing. Titan reserves the right to make changes at any time, without notice. Due to continuous innovation, specifications may progressively change. Contact one of our dependable sales reps or call our dedicated customer service team for more information.

J. Wagner GmbH | Otto-Lilienthal-Str. 18 | 88677 Markdorf | Customer.Service-PF@wagner-group.com | titantool-international.com